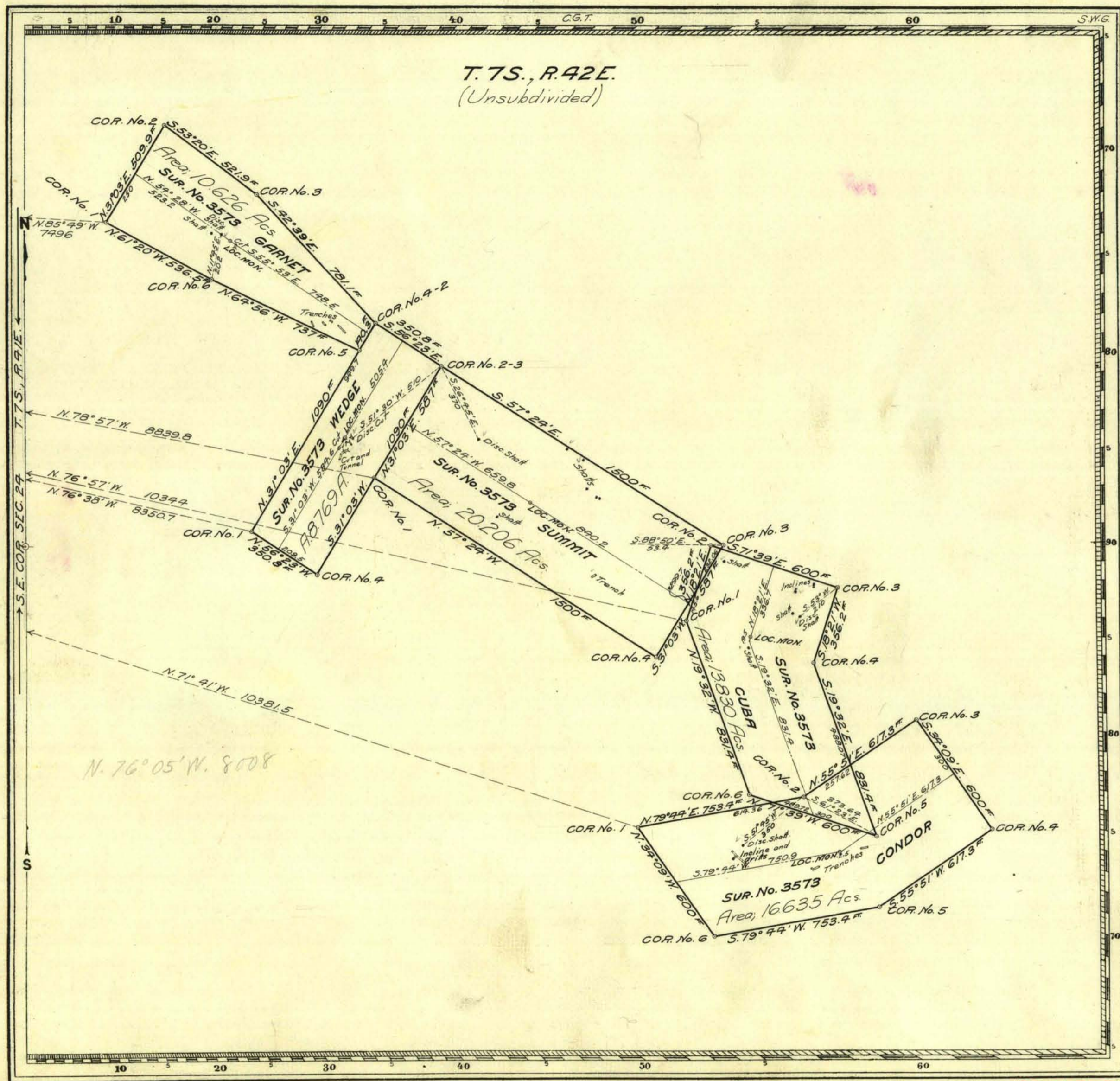


Serial # 02051
Patent # 229747
Oct. 12, 1911

Office



H.S.P. Claim Located Wedge, January 1, 1907 FEB.
 Others January 1, 1908
 Mineral Survey No. 3573

Lot No. _____
 Carson City Land District.

PLAT
 OF THE CLAIM OF
John L. Roberts

KNOWN AS THE
SUMMIT, CUBA, GARNET, WEDGE
and CONDOR LODES

IN Gold Mountain MINING DISTRICT,
Esmeralda COUNTY, Nevada
 Containing an Area of 70.066 Acres.
 Scale of 400 Feet to the inch.
 Variation 17° E.

SURVEYED August 3-8, 1908 BY
F. A. Lucy U.S. Mineral Surveyor,

The Original Field Notes of the Survey of the Mining Claim of
John L. Roberts
 known as the
Summit, Cuba, Garnet, Wedge and
Condor Lodes

from which this plat has been made under my direction, have been examined and approved, and are on file in this office; and I hereby certify that they furnish such an accurate description of said Mining Claim as will, if incorporated into a patent, serve fully to identify the premises, and that such reference is made therein to natural objects or permanent monuments as will perpetuate and fix the locus thereof.

I further certify that Five Hundred Dollars worth of labor has been expended or improvements made upon said Mining Claim by claimant _____ or his grantors, and that said improvements consist of 17 shafts, 4 cuts, 7 trenches, 2 inclines, 1 cut and tunnel, and 1 incline and drills; Value, \$4850.00

that the location of said improvements is correctly shown upon this plat, and that no portion of said labor or improvements has been included in the estimate of expenditures upon any other claim.

And I further certify that this is a correct plat of said Mining Claim made in conformity with said original field notes of the survey thereof, and the same is hereby approved.

U.S. Surveyor General's Office. Matthew Kyle
 Reno, Nevada } U.S. Surveyor General for
 November 21, 1908 } Nevada

3573 v.d.